

PERIOD FEEL

In keeping with the age and style of the house, Anna-Marie opted for the stylish Kensington **bath** and **shower mixer** and a wall-mounted **radiator**, both from Burlington Bathrooms. She repainted her existing **bath** using Farrow & Ball's Off Black. The bespoke **panelling**, made by the couple's joiner, is painted in Hardwick White and the walls are **painted** in Down Pipe, both from Farrow & Ball. The Ruby nine-lamp **chandelier**, from Amazon, is a striking finishing touch





Real Homes
BATHROOM MAKEOVER

Vintage APPEAL

Anna-Marie Bennett and Rob Stannard created an elegant bathroom that's perfectly in keeping with their charming period home

WHEN Anna-Marie and Rob moved into their period farmhouse, they knew the bathroom had to be the first room on their makeover checklist. 'It was definitely in need of more than a simple update,' recalls Anna-Marie. 'It was inconveniently situated at the back of the house at the end of a long corridor, and we weren't utilising the overall space as well as we could. We both agreed that we wouldn't be happy long-term if we made do with a compromise, so it was important to get any changes right first time.'

As the bathroom was smaller than the adjacent spare bedroom, the couple decided to switch the rooms to give them the space they needed for a statement bath and separate shower. Anna-Marie designed a new layout, aiming to create a bathroom that was functional but high-impact with a variety of luxurious fixtures and fittings. The 10-week project required extensive work, so in order to keep the ➤

'I wanted to create a look that was in keeping with the age of the property, but I was also keen to add individuality by giving it the feel of a boutique hotel'



RIPE FOR CHANGE
Below A revamp of the old bathroom couldn't come soon enough for Anna-Marie

THE OWNERS

Anna-Marie Bennett, an interior designer, lives with her partner Rob Stannard, an IT consultant. Anna-Marie runs Finesse Interior Design (interior-finesse.com)

THE PROPERTY

A four-bedroom, detached Victorian farmhouse in Tebworth, Bedfordshire

ANNA-MARIE LOVES

Shopping on Ebay
Vintage fairs
Autumnal colours
Grand Designs
Countryside living
Designer Tom Dixon
Marrakech, for its inspirational colours, textures and scents

TOTAL PROJECT COST

£31,600

process simple, the couple employed a single contractor to carry out all the building work, including completing the plumbing, electrics, tiling and decorating.

With her great eye for design, Anna-Marie couldn't wait to transform the blank canvas into a smart and stylish space. 'I wanted to create a look that was in keeping with the age of the property, but I was also keen to add individuality by giving it the feel of a boutique hotel,' she explains. 'The joiner made bespoke panelling for the walls to work with the fittings I chose, and once it was painted in a traditional soft grey I instantly loved the feeling of warmth it created.'

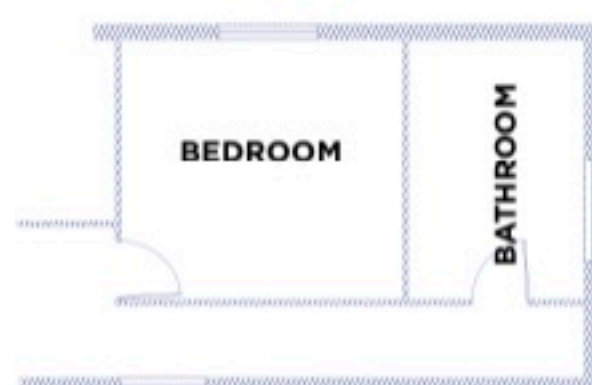
To suit her chosen scheme, Anna-Marie opted for traditional fittings to complement the existing roll-top bath. Wood-effect porcelain floor tiles add warmth and texture to the room, while underfloor heating ensures it's comfortable underfoot. With the basics installed, she then used accessories to add a sense of drama to her new space. A large chandelier is the stunning focal point of the room, while an oversized French-style mirror above the pedestal basin adds a touch of glamour and the illusion of more space. 'We didn't have any storage yet, so I was thrilled to find a freestanding vintage washstand that was completely in character with the style of the room,' says Anna-Marie. 'After adding some framed artwork to create a feature wall, the scheme had a hint of French style, so I finished off the look with a bespoke Roman blind in a pretty toile de Jouy fabric.'

Looking at the elegant room she designed from scratch, Anna-Marie says she's amazed the project was fairly problem-free and completed almost on budget. 'We did overspend slightly because we had to fit some additional steelwork when we moved the supporting wall between the two rooms, which obviously added to our overall costs,' she admits.

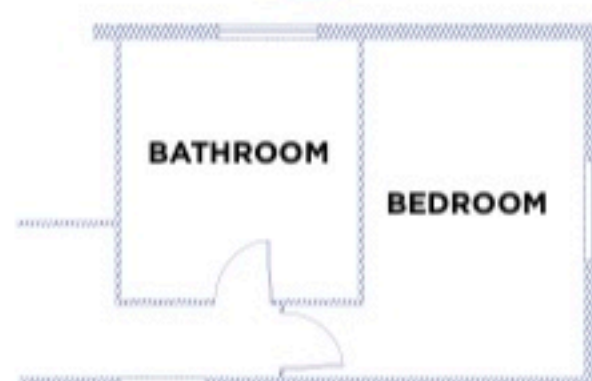
The finished bathroom has given Anna-Marie a fantastic sense of achievement and she takes pride in the fact that it's so original in style, thanks to the mix of old and new. 'The dramatic colour scheme and extravagant accessories are not what you'd expect, but I feel it reflects my personal taste,' she says. 'Now we've just got to get the rest of the house up to scratch!'

PLANS

BEFORE

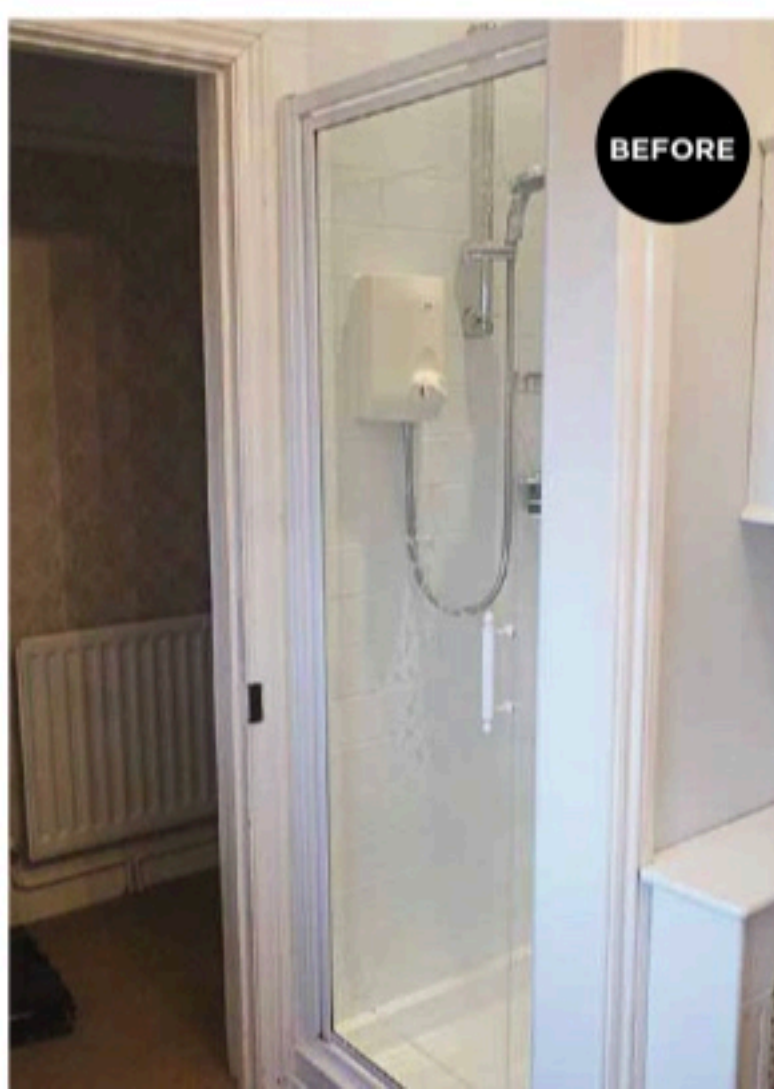


AFTER



SHAPING UP

The generous dimensions of the new bathroom meant it was possible to fit in a shower and statement bath



BEFORE

COSTS & CONTACTS

Building work (including installation, panelling and decorating) **£25,000**
Fixtures and fittings **£5,000**
Shower tiles **£600**
Flooring **£500**
Radiator **£500**
TOTAL £31,600

Builder CDS Carpentry and Building Services, 07779 036691, cdscarpentryandbuildingservices.co.uk
Sanitaryware Burlington Bathrooms, 01322 473222, burlingtonbathrooms.com



ROOM TO SPARE
Left, far left and below The new shower enclosure is generously sized for a luxurious feel, and it also complements the basin, both from Burlington Bathrooms. The Bianco Crackle Glaze wall tiles from Mandarin Stone enhance the authentic period scheme. Mirror, from Ayers & Grace

FAUX GRAIN

Below Wood-effect porcelain floor tiles from The Bathroom and Tile Art Studio are a practical choice for the bathroom and are suitable for use with underfloor heating. The blind, made with fabric from Lewis & Wood, helps to soften the overall look. The period-style graphite radiator is from Cast Iron Radiators

LUXURY TOUCH

Below left Both pretty and practical, the freestanding vintage washstand provides storage and display space; for similar, try Vinterior



Opulent style

Mix classic furniture pieces with a sparkling chandelier and a dramatic colour palette to recreate Anna-Marie's luxury bathroom

THE ESSENTIALS



From left: Mercury XT Sorbonne **FLOORING**, £23 per m², Leoline Floors. Metro subway **TILE** in white, W7.5xL15cm, £43 per m², The Baked Tile Company. Under The Eaves Premium Blend v700 walls & ceilings emulsion **PAINT**, £28 for 2.5ltrs, Valspar



THESE BASINS
COME IN A RANGE
OF WIDTHS TO
SUIT YOUR SPACE

1 Silver California **MIRROR** with ornate frame, H109xW140cm, £269, Ayers & Graces 2 Edwardian **BASIN** with classic pedestal, H90xW80xD51cm, £439, Burlington Bathrooms 3 Tabia rustic recycled glass silver **VASES**: small, H21xDia.13cm, £19.95; large, H31xDia.20cm, £36.95, Shimu 4 Belgravia thermostatic single outlet **SHOWER** valve with handset, H90xDia.20.32cm, £1,245, Crosswater 5 Boutique **CHANDELIER** with IP44 rating, H56.5xDia.49.5cm, £175, Frontline Bathrooms 6 Marit **COTTON LINEN** fabric in Carbon, £35 per m, Villa Nova 7 Priory cast-iron four-column **RADIATOR**, H65xW63cm, £538.32, The Radiator Company 8 Rothermere chrome **BASIN TAPS**, H14.1xW9.2cm, £79, Pure Bathroom Collection 9 Provencal white **CHEST OF DRAWERS**, H80xW122xD46cm, £540, The French Bedroom Company 10 Geminus roll-top **BATH**, H60xL167xW74.5cm (three sizes available), from £1,591, Albion Bath Company